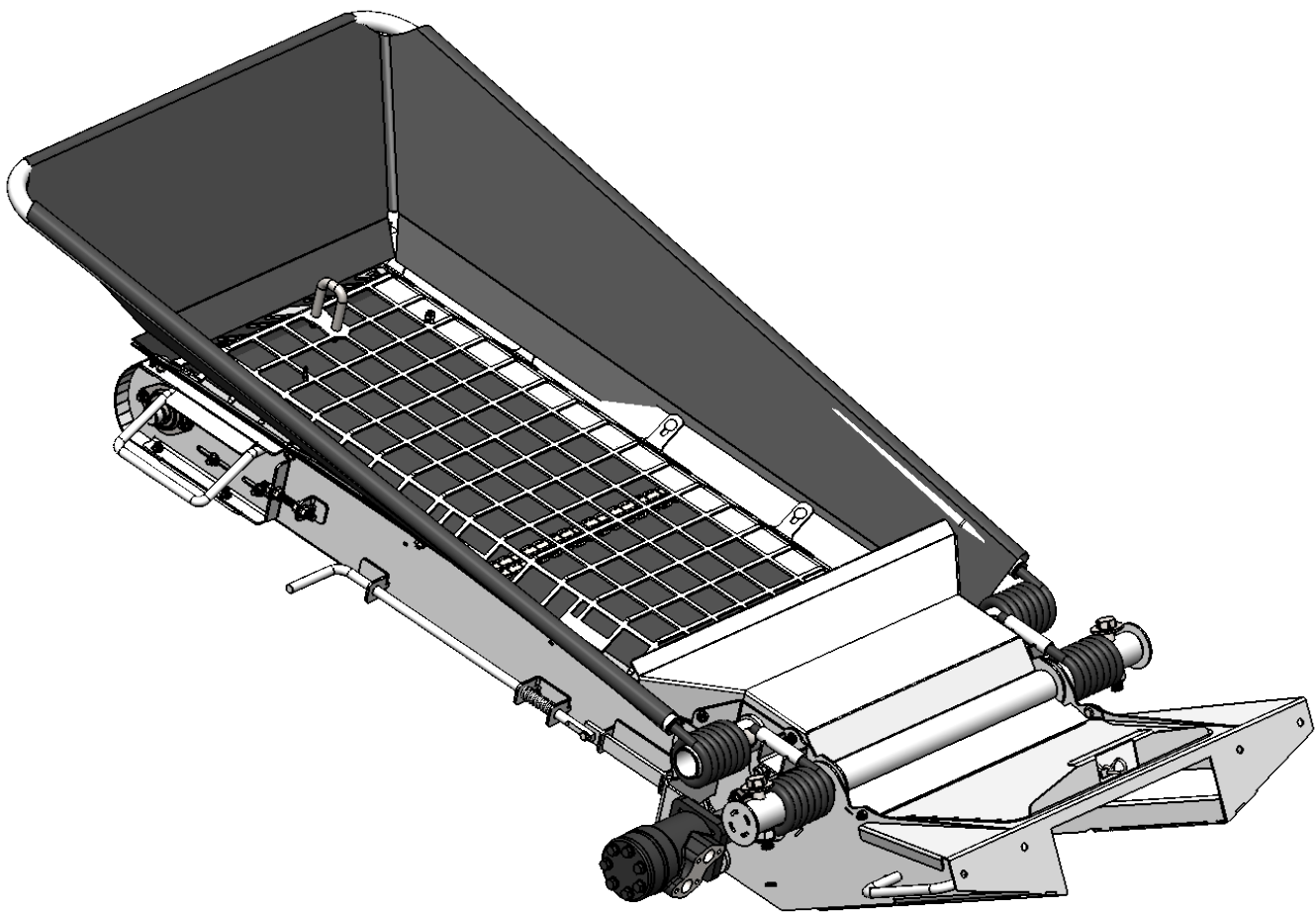


# Feeder Conveyor Installation



## Installation Instructions

- **JAS6000A**

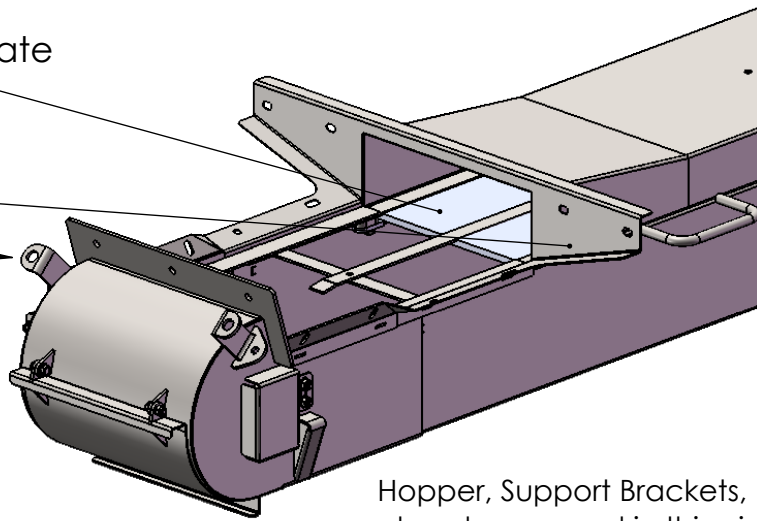
ITEM NO.	PART NUMBER	DESCRIPTION	QTY.
1	Conveyor	Conveyor Assembly	1
2	JAS6000A	Feeder Conveyor	1
3	JAS6008A	Latch, Bracket, Assembly	1
4	SMNF-10-1.5-3	M10-1.50mm Flange Nut SS	20
5	SMBC-10-1.5-30-2-3	M10-1.5mm X 30mm Carriage Bolt SS	4
6	JAS5074P	Mount, Hydraulic Line	4
7	JAS5163P	Hose Clamp (A88996)	4
8	JAS5164P	Hose Clamp Plate (A88991)	4
9	SMBC-10-1.5-50-2-3	M10-1.5mm X 50mm Carriage Bolt SS	8
10	SMLW-010-M-3	10mm Lock Washer SS	4
11	SMBH-10-1.5-16-2-3	M10-1.5 X 16 mm Hex Bolt SS	12
12	HYDH-005	Hydraulic Hose	1
13	HYDH-006	Hydraulic Hose	1
14	1115-10-08	#10 Male ORB to #8 Male JIC Adapter	2
15	SMBH-10-1.5-25-2-3	M10-1.5 X 25mm Hex Bolt SS	3
16	JAS6028P	Top Corner Filler	2
17	SMWI-10-020-M-2	M10 Flat Washer SS	3
18	SMNN-10-1-2-3	10-1.5mm Nylon Lock Nut SS	3
19	JAS5561W	Extension, Main Latch, TBH [AA84296]	1
20	SIBC-050-125-1-1-3	1/2" X 1,1/4" SS Carriage Bolt	4
21	SIWI-050-100-062-3	1/2" SS Flat Washer G18-8	4
22	SINN-050-1-3	1/2" Nylon Lock Nut NC SS	4

**IMPORTANT: APPLY ANTISIEZE TO ALL THREADED STAINLESS STEEL SURFACES TO PREVENT COLD WELD!**

## Step 1

Remove these parts from your conveyor

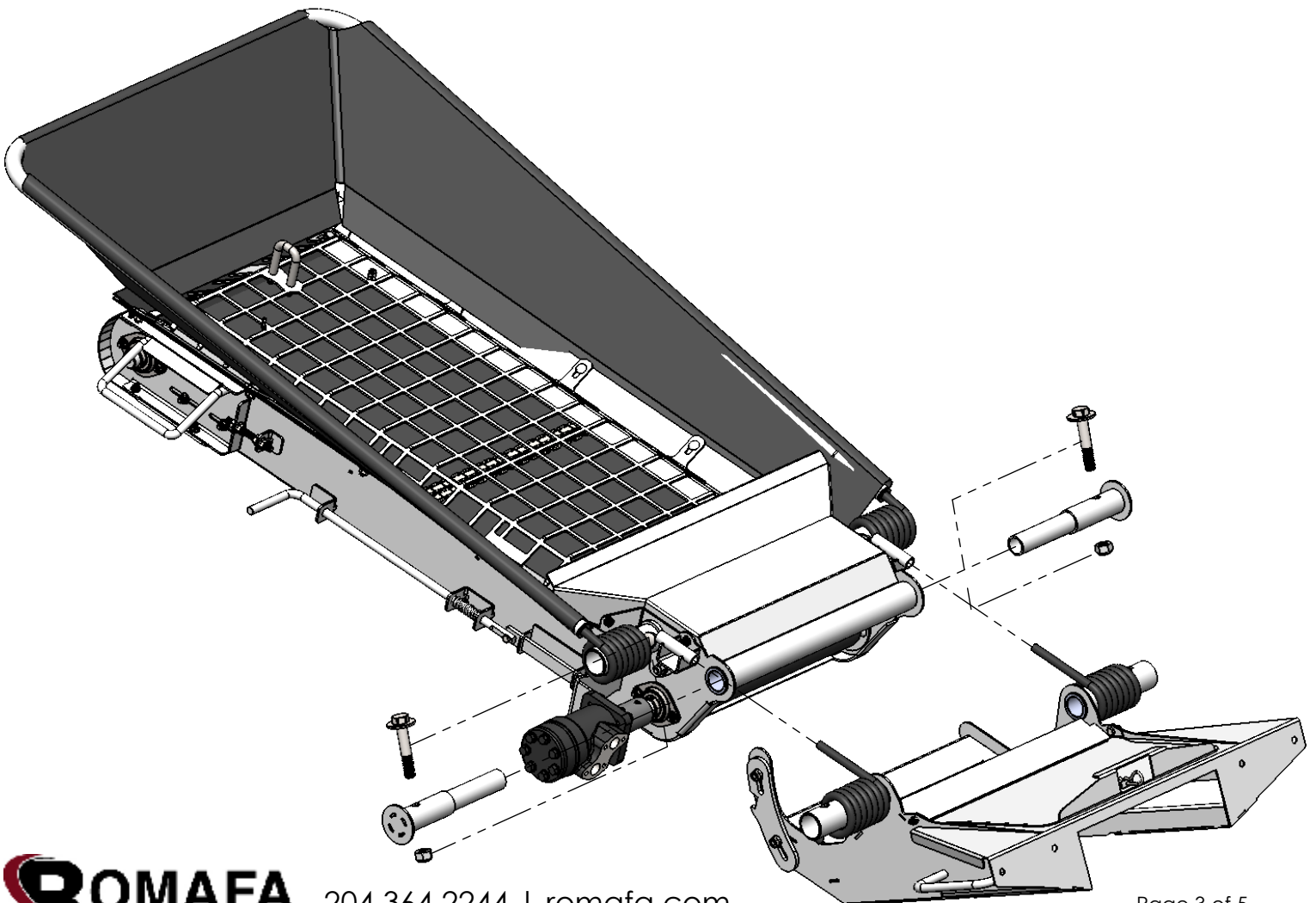
- Hopper
- Counterbalance Weight Plate (under the top side of the belt)
- Hopper Support Brackets (both sides)
- Bottom Handle



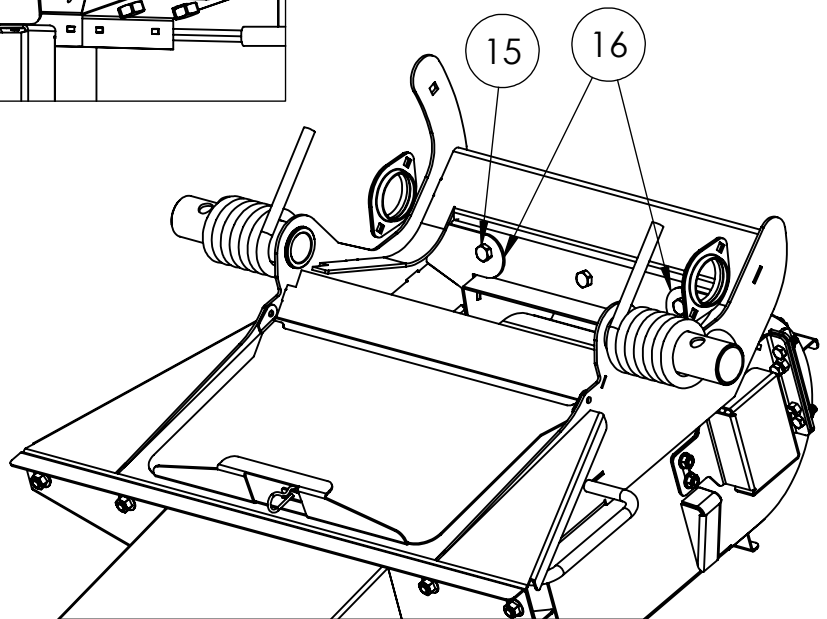
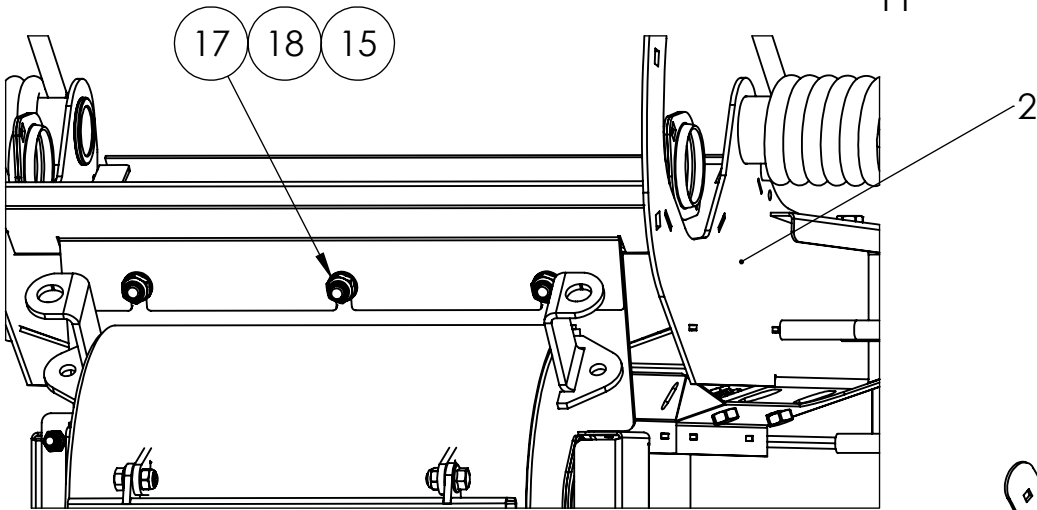
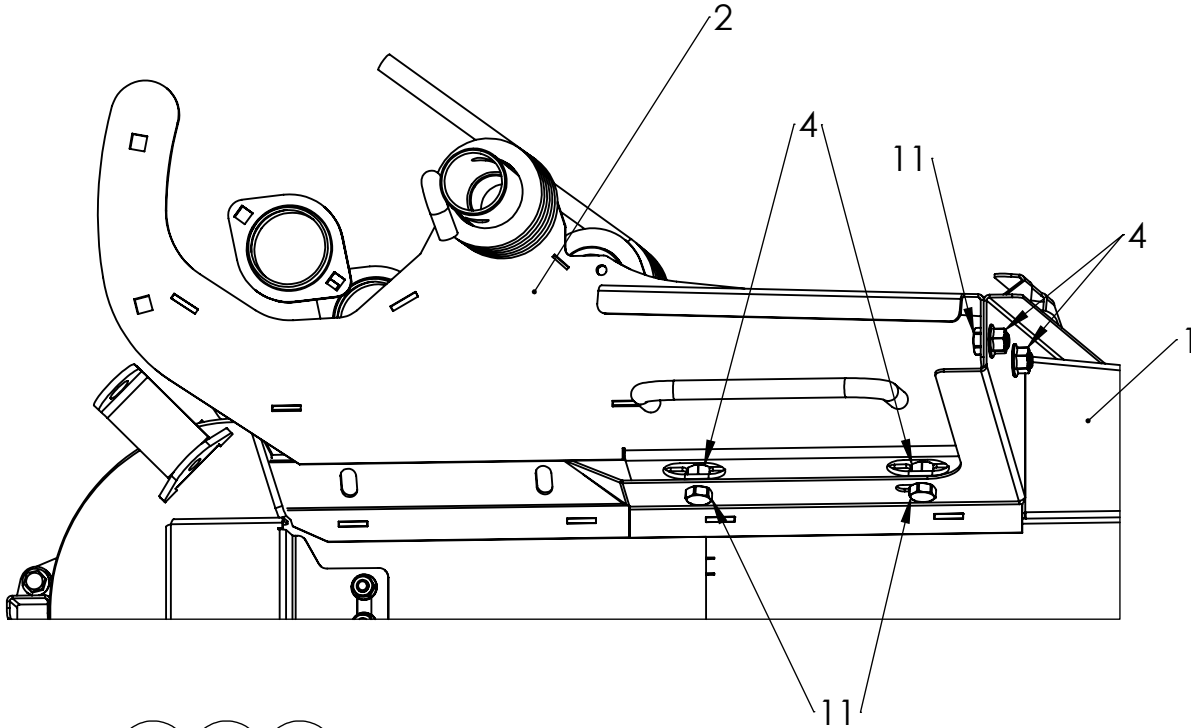
Hopper, Support Brackets, & Handle already removed in this picture

## Step 2

Detach Mounting Bracket from Feeder Conveyor



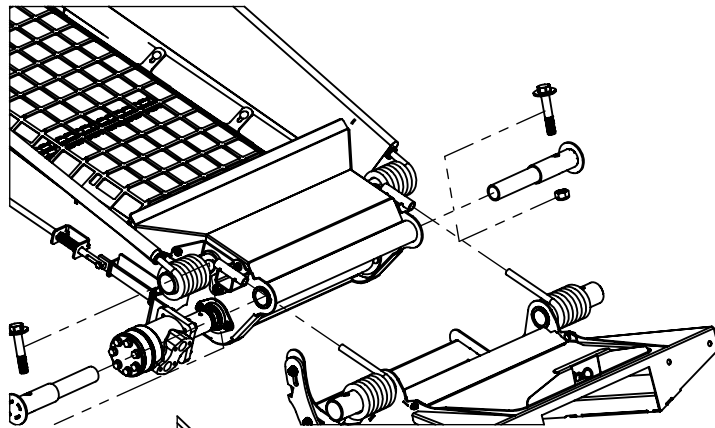
**Step 3**  
Attach Feeder Conveyor  
Mounting Bracket to conveyor



Attach the corner filler  
plates (16) on the inside  
of the conveyor lip

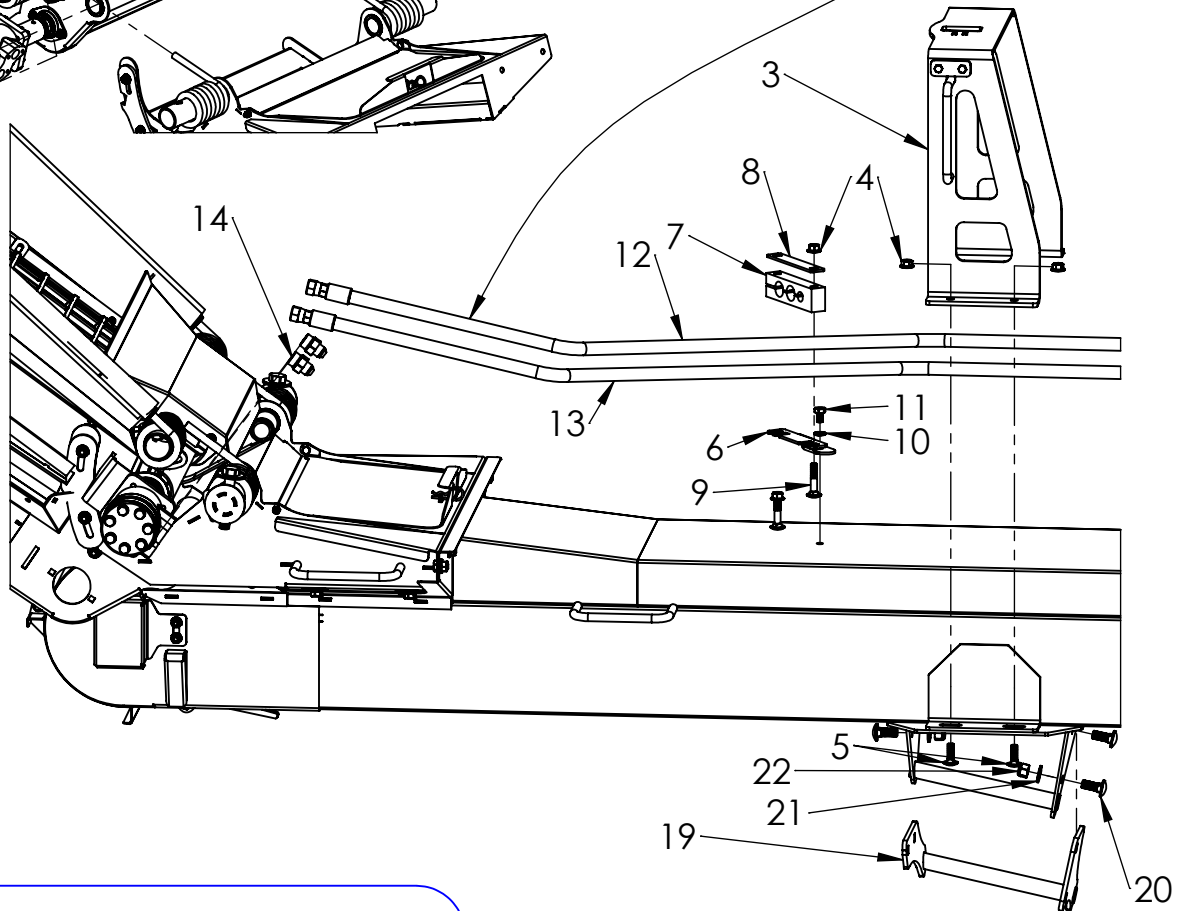
**STEP 4**  
REATTACH FEEDER CONVEYOR  
TO MOUNTING BRACKET

1. Move feeder into place and insert the pivot pins
2. Rotate feeder conv. so that the spring loop is on the top side
3. Insert bolt with the bolt head and washer coming down on the spring

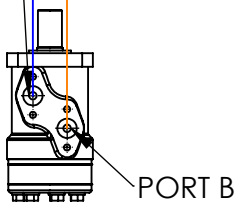


Ensure you leave enough slack in hydraulic lines to allow conveyor to fold up

**STEP 5**  
INSTALL LATCH  
BRACKET &  
HYDRAULICS

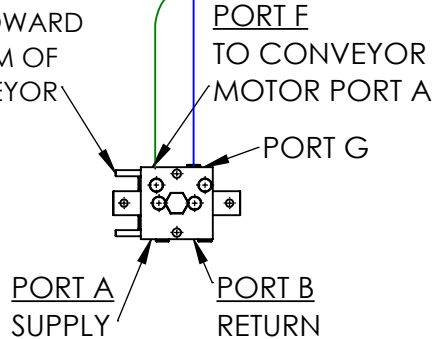


PORT A  
RETURN TO  
VALVE PORT G



**FEEDER CONVEYOR  
MOTOR - T00137P**

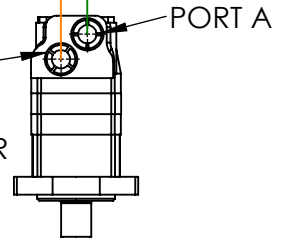
PINS TOWARD  
BOTTOM OF  
CONVEYOR



**HYDRAULIC VALVE  
- JAS5185P**

PORT E  
TO CONVEYOR  
MOTOR PORT A

PORT B  
TO FEEDER  
CONVEYOR  
PORT B



**CONVEYOR MOTOR  
- T00142P**